



Electoral Card 2

El Salvador, Central America. October 2008.



INICIATIVA SOCIAL
PARA LA DEMOCRACIA

ISD

ISD

Is a non-governmental organization of civic education, which promotes processes of public accountability, participation Citizen and impact the electoral system. His philosophy is the Strengthening democracy and the establishment of the governability of the country, through the pursuit and implementation of a genuine democratic political culture.

Emerges on December 4, 1992 and obtained his legal status. By agreement No. 128 Affairs and published in the D.O the July 27, 2004. Volume 364.

www.isd.org.sv

Iniciativa Social para la Democracia.
Urb. Satélite, Pasaje Venus, No. 23 "U", S.S., El Salvador, C.A.
Tel: 2284-9726; 2274-6182

Electoral card presents the second edition, in which we give follow-up to aspects related to the confidence to the electoral system, the public financing for the electoral campaigns, definitive closing of the Electoral Record, residential vote and integration of Electoral Departmental Meetings..

The information we presents, is an proper elaboration taking as a source of reference the surveys of the IUDOP related to the electoral process from 1999 to 2008; information of the Electoral Record and information in general of the TSE and the legal in force frame.

PRESENTATION



Ramón Villalta
Director Ejecutivo
ISD

Not governmental organization of civic education, which promotes the civil participation and the public transparency

ISD

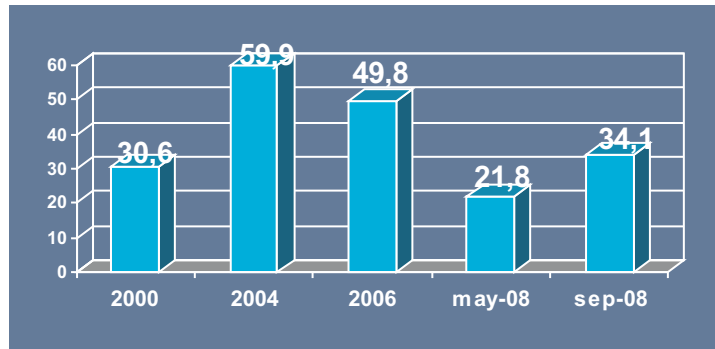
Constructing Political Democratic Culture

All the complementary this information published in ISD's web site.

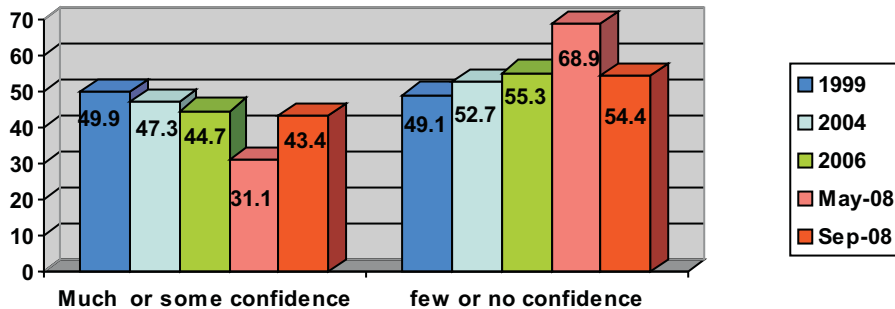
www.isd.org.sv

Iniciativa Social para la Democracia
Urb. Satélite, Pasaje Venus, No. 23 "U", S.S. El Salvador, C.A.
Telefax: 2284-9726 y 2274-6182

The TSE has lost confidence.
34.1 % has great or something of Confidence in the TSE.



43.4% has small or no confidence in the electoral process 2009

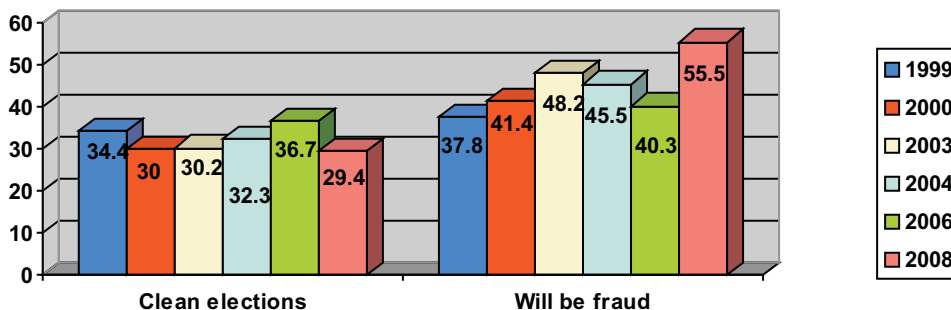


86.2% thinks to vote in the elections 2009

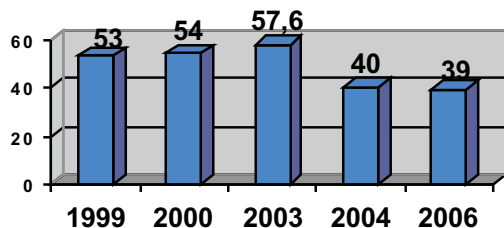
According to survey IUDOP September, 2008

Perception on the transparency of the choices elections

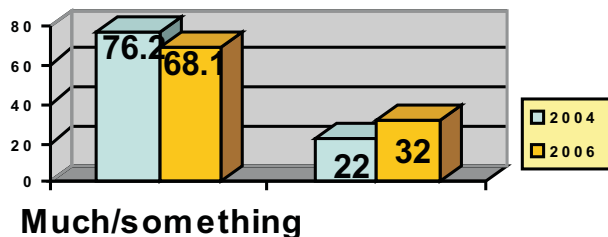
55.5% thinks that there will be fraud
in the elections 2009



From 1999 to 2006 it has diminished those who believe that the elections are lost of time.



The citizenship believes that the electoral process is useful for the democracy



Graphs elaborated with base to information of surveys of opinion of the IUDOP.

1999: 6 al 11 february
2000: 12 y el 20 to february
2003: 8 y el 16 to february
2004: 14 y el 22 to february

2006: 4 al 14 to february
2008: 3 al 12 to may
2008: 13 al 22 to september

13 Millions Of dollars will invest the State with a view to anticipation of political debt.

Election type	1989	1999	2003	2004	2006	2009
*presidential	¢10.00	▪ ¢28.86		\$ 3.60		\$ 3.92
* Deputies	¢ 6.00		▪ \$ 1.79		▪ \$ 2.22	\$ 2.33
*Mayors	¢4.00		▪ \$ 1.45		\$ 1.66	\$ 1.74

Party	Estimated amount*1	Calculate of 75% of anticipation*2
ARENA	8,354,483.16	6,265,862.37
CD	490,174.80	367,631.10
FMLN	6,289,348.00	4,717,011.00
PCN	1,308,632.40	981,474.30
PDC	816,244.41	612,183.31
FDR*3		57,142.86
	17,258,882.77	13,001,304.94

*1 Amount estimated with base to votes obtained in presidential election 2004 and municipal and legislative choices(elections) 2006, art.189 Ce

*2 Calculation of 75 % maximum that can receive a party with base to the votes obtained in the previous election, art. 190 Ce

*3 FDR: According to art. 190 inci 2nd " The political parties or Coalitions contenders who have not taken part in the previous election will have right to a maximum anticipation of five hundred thousand colons "

Source; proper Elaboration



Observador electoral
2009

Construyendo Cultura
Política Democrática



Calculate of political debt with base to results last election.

Type of election	valid Votes last election	Value updated of the vote I	Mount in \$ of reference to investing in every election 2009.
PRESIDENTIAL ELECTION 2004	2,277,473	3.92	8,927,694.16
MAYORS ELECTION 2006	1,998,014	2.33	4,655,372.62
DEPUTIES ELECTION 2006	2,131,701	1.74	3,709,159.74
TOTAL			17,292,226.52

Source proper Elaboration

Calculation political debt Presidential Election with base to 3.92 \$ for vote

POLITICAL PARTY	*VALID VOTES CHOICE (ELECTION) PRESIDE 2004	*POLITICAL ESTIMATED DEBT 2009
ARENA	1,314,436	5,152,589.12
FMLN	812,519	3,185,074.48
PDC-CDU	88737	347,849.04
PCN	61,781	242,181.52
TOTAL VOTES VALIDE	2,277,473	8,927,694.16

Source proper Elaboration

Calculation political debt Deputies' election with base to \$ 2.33 for vote

POLITICAL PARTY	VALID VOTES ELECTION DELEGATED 2006	POLITICAL DEBT ESTIMATED 2009
ARENA	783,230	1,824,925.90
FMLN	785,072	1,829,217.76
CD	61022	142,181.26
PCN	228196	531,696.68
PDC	138,538	322,793.54
PNL	1,956	4,557.48
TOTAL VOTES VALIDE	1,998,014	4,655,372.62

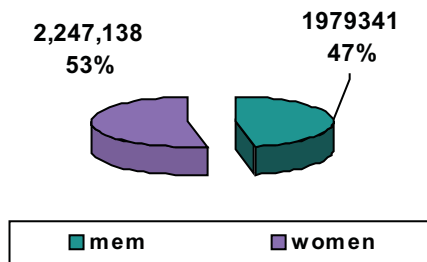
Source proper Elaboration

4,226,479 electors definitive closing of the Electoral Record elections 2009

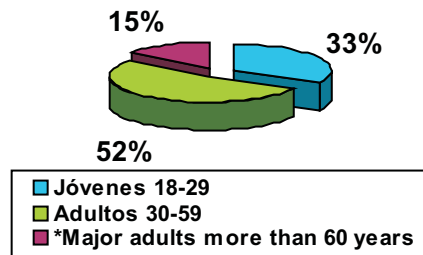
< 18 years		18 -23		24 -29		30 - 39	
Male	Fem.	Male	Female	Male	Female	Male	Female
7,291	7,404	337,651	344,813	339,793	364,979	459,981	520,286
14,695		682,464		704,772		980,267	

40 - 59		60 - 99		> 99 años	
Male	Female	Male	Female	Male	Fem.
556,125	664,558	278,332	344,853	168	245
1,220,683		623,185		413	

Electoral register for sex



electoral register for age



- 1,247,034 electors in 14 municipalities of the AMSS, represent 29.51 % of the Electoral Record.
- 2,123,659 electors in 24 Municipalities, represent 50.25 % of the Electoral Record.
- 3,182,871 electors in 73 Municipalities represent 75.31 % of the electoral Record

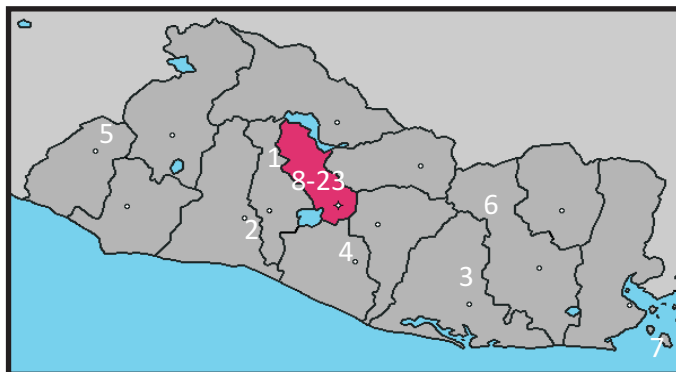
59,238 purified by death according to OAS audit in December 2007
 58,758 purified by death according to TSE from March 2006 to September 2008
 10,375 purified by death according to TSE from July 21-September 19 2008

CLOSING OF THE REL 21 GIVES IN JULY GIVE 2008	4,236,858
Purifications	10,386
Deaths for repeated	10,375
Exclusion for repeated	9
Exclusion for fraudulent inscription	1
Exclusion for loss of right	1
Reincorporations to the electoral record	7
Rehabilitation for evident mistakes	2
Rehabilitation of rights	3
Reversion for evident mistake	1
Inscription for evident mistakes	1
DEFINITIVE CLOSING REGISTER ELECTORAL ELECCIONES 2009 (20 DE SEPT 2008)	4,226,479

ELECTORAL RECORD ELECTIONS 2006	3.801.040
Incorporations	487.363
Inscriptions	487.153
Rehabilitation of rights	207
Reincorporation for evident mistake	3
Exclusions 2006-2008	61.924
Deaths	58.758
Loss of repeated rigths	3.148
Repeated	17
Fraudulents Inscriptions	1
ELECTORAL RECORD ELECTIONS 2009	4.226.479

a) Deceased in the REL according to formless Audit OEA to dic/07	148,254	
b) Purified by death according to report OEA to dic/07	59,238	b + c 69,613
c) Purified between July 21 to September 19 according to report TSE	10,375	
d) Purified by death between elections 2006 and definitive closing 2008 according to report TSE to September, 2008	58,758	b + c - d 10,855
		¿Why this difference.

4.65% Of electors they were taking part in the second Project 4.65 pilot% of Residential Vote.



**8.8% of
262 municipalities**

Departments	Municipalities	Electors	Electoral weight
SAN SALVADOR	1. EL PAISNAL	8,948	0.21
LA LIBERTAD	2. NUEVO CU SCATLAN	5,883	0.14
USulutAN	3. TEC APAN	4,919	0.12
LA PAZ	4. SAN JUAN NONUALCO	11,505	0.27
AHUACHAPAN	5. TURIN	6,518	0.15
SAN MIGUEL	6. CAROLINA	5,200	0.12
LA UNION	7. MEANGUERA DEL GOLFO	1,874	0.04
CUSCATLAN	8. COJUTEPEQUE	38,368	0.91
	9. SUCHITOTO	14,878	0.35
	10. SAN PEDRO PERULAPAN	27,884	0.66
	11. SAN JOSE GUAYABAL	6,203	0.15
	12. TENANCINGO	4,283	0.10
	13. SAN RAFAEL CEDROS	11,241	0.27
	14. CANDELARIA	6,521	0.15
	15. EL CARMEN	7,865	0.19
	16. MONTE SAN JUAN	6,036	0.14
	17. SAN CRISTOBAL	5,063	0.12
	18. SANTA CRUZ MICHAPA	7,111	0.17
	19. SAN BARTOLOME PERULAPIA	5,601	0.13
	20. SAN RAMON	3,989	0.09
	21. EL ROSARIO	2,748	0.07
	22. ORATORIO DE CONCEPCION	2,300	0.05
	23. SANTA CRUZ AN ALQUITO	1,795	0.04
ELECTORAL TOTAL RESIDENTIAL VOTE		196,733	4.65



Distribution of seats by political parties in the JED

DEPARTAMENTOS	PRESIDENT	SECRETARIO	SECRETARY	SECOND MEMBER	THIRD MEMBER
SAN SALVADOR	FMLN	PCN	ARENA	PDC	FDR
SANTA ANA	PCN	ARENA	PDC	CD	FMLN
SAN MIGUEL	ARENA	PDC	FDR	FMLN	PCN
LA LIBERTAD	PDC	CD	FMLN	PCN	ARENA
USulután	FDR	FMLN	PCN	ARENA	PDC
SONSONATE	FMLN	PCN	ARENA	PDC	CD
LA UNIÓN	PCN	ARENA	PDC	FDR	FMLN
LA PAZ	ARENA	PDC	CD	FMLN	PCN
CHALATENANGO	PDC	FDR	FMLN	PCN	ARENA
CUSCATLÁN	CD	FMLN	PCN	ARENA	PDC
AHUACHAPAN	FMLN	PCN	ARENA	PDC	FDR
MORAZÁN	PCN	ARENA	PDC	CD	FMLN
SAN VICENTE	ARENA	PDC	FDR	FMLN	PCN
CABAÑAS	PDC	CD	FMLN	PCN	ARENA

Thanks to the support of:



SHARE
FOUNDATION

ISD is member of:



COALICIÓN
por la Descentralización,
la Participación y la Transparencia



Observador electoral
2009

Construyendo Cultura
Política Democrática

